

Product:	Job Editor for YRC1000
Release Date:	4/1/2017
Part Number:	Description:
177921-1	Software Pkg, Job Editor for YRC1000

Description:

Job Editor for YRC1000 is a PC-based software program that allows users to create and edit YRC1000 job programs entirely off-line. Job Editor for YRC1000 also utilizes the controller's all.prm parameter file and customizes itself to the application and options that have been purchased with the robot controller.

Features:

- Three levels of the INFORM language: Reduction, Standard, Extension
- Allows users to Add, Modify, Delete, Copy, Paste and Reverse Paste instructions
- Users can change the motion type of a Move instruction, and can also edit the speed of any motion instruction
- Define position variables
- Define, Edit and Delete control groups
- Add, Modify and Delete job comments
- Change a variable name file (VARNAME.DAT)
- Search function that allows users to search for specific items in a job
- Change an I/O name file (IONAME.DAT)
- Display Options lets the user filter the job view by selecting whether or not to display additional job information, such as step number, I/O names and/or variable names

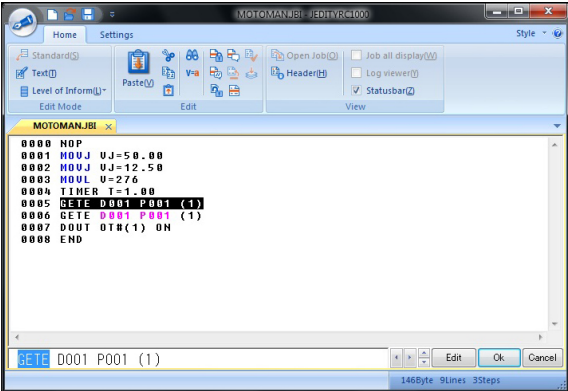
Requirements:

- Windows® 10 (64-bit) OR Windows 7 (32-bit/64-bit) SP1
- CPU Intel Core i5 or better
- Memory 2GB or better
- Disk Space 1GB or better

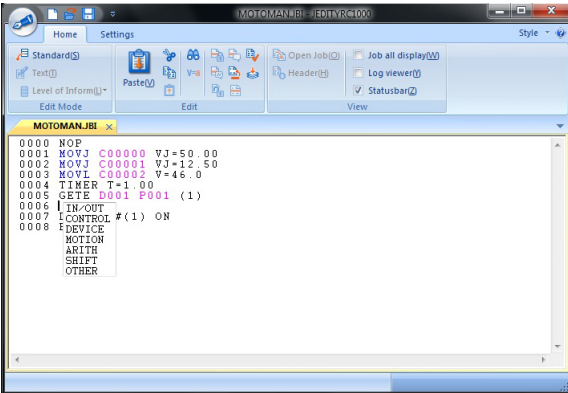
Compatibility:

- YRC1000 controller

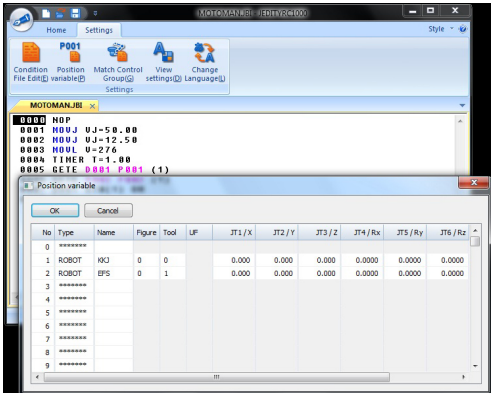
Screens:



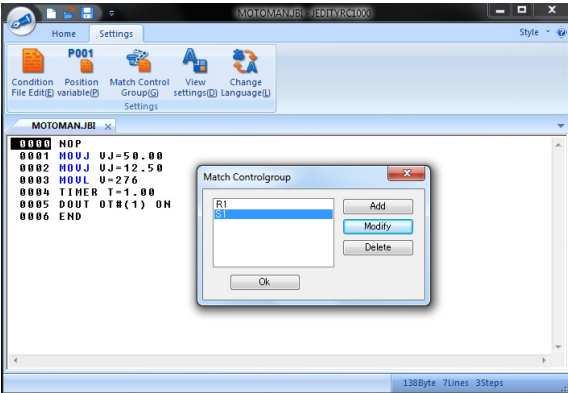
Modify existing instruction



Insert instruction



Editing position variables



Editing control groups

JOB EDITOR
FOR YRC1000